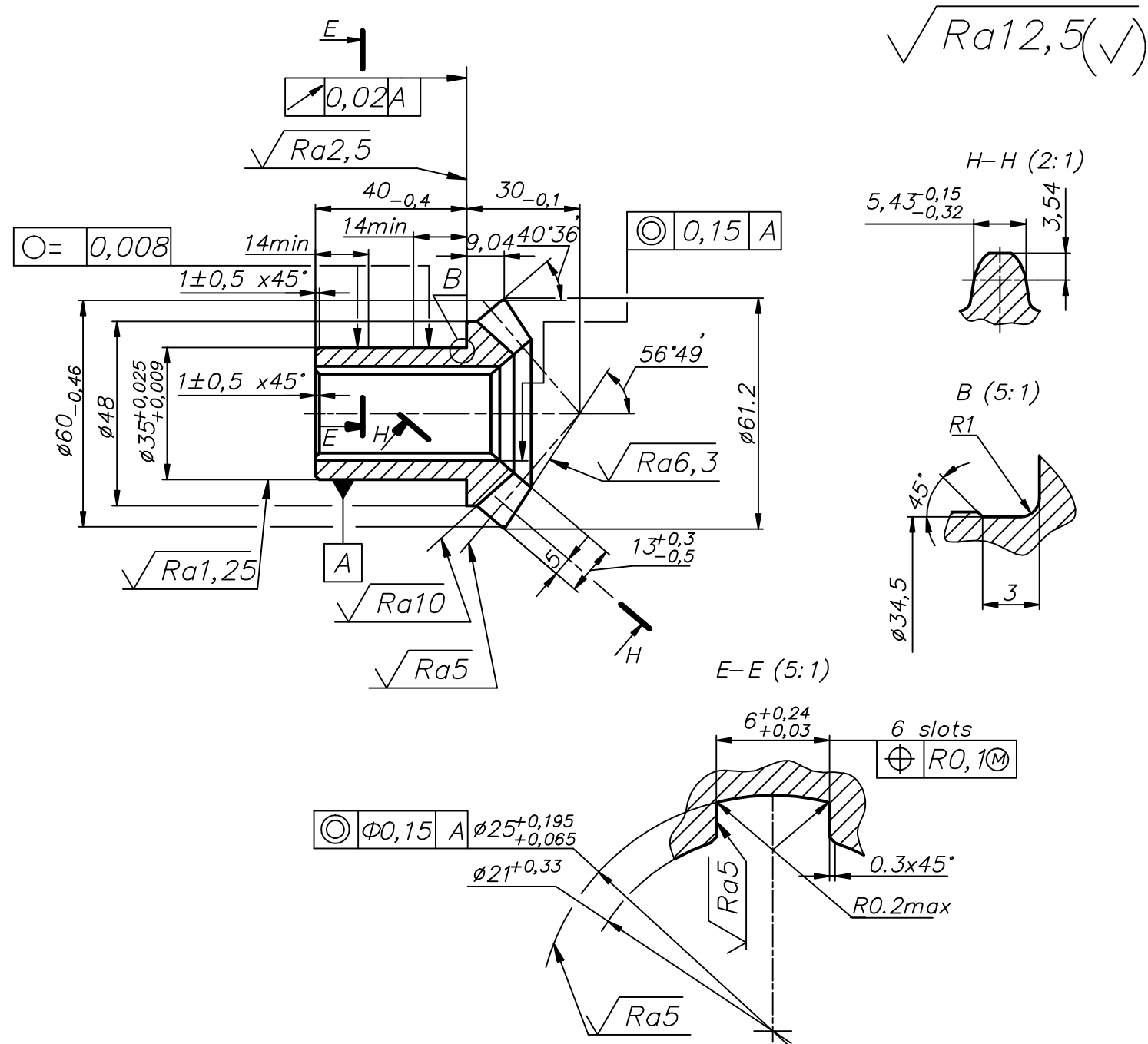


Picture 50



External transverse module	$m_e$	4
Teeth number	Z	14
Tooth type	-	straight
Shifting coefficient	$X_e$	-
Modification coefficient of change in tooth thickness	$X_{\tau}$	-
Pitch angle	$\delta$	$49^{\circ}24'$
Accuracy grade GOST 1758-81	-	11 Bc
Tooth sizes at measuring cut	$\xi$	$5,43^{+0,15}_{-0,32}$
	$h_a$	3,54
Gear crossed axis angle	$\Sigma$	$90^{\circ}$
Average transverse module	$m_m$	3,3
back angle distance	Re	36,88
Average cone distance	R	30,38
Average reference diameter	d	46,13
Root angle	$\delta_r$	$41^{\circ}59'$
External tooth high	$h_e$	8,8

1. Forging
2. Material: steel 20CrMnTi
3. Carburize h 0,7... 1,2mm HRC 56...60
4. Hardness 285 ... 477 HB
5. Mechanical treatment after carbonization
6. Kit up and pack drawings 49 – 50 by pairs.
7. Max. size deviations  
 Opening – H14  
 Shaft – h14  
 Others IT14/2