

图号：303m

材料：301-EH不锈钢

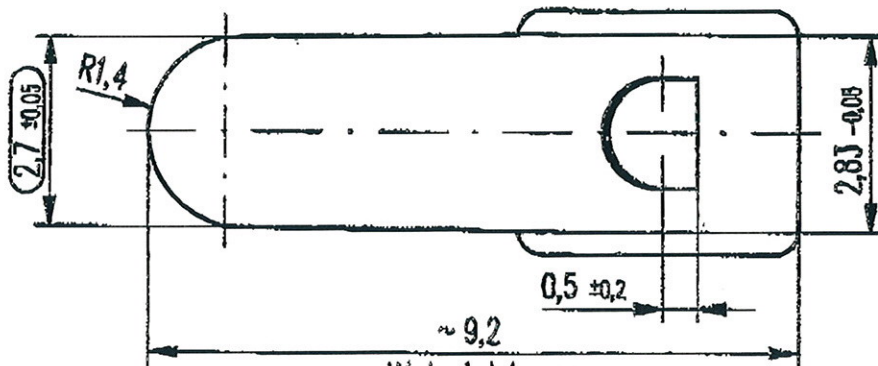
硬度490HV(48.4HRC)

抗拉强度1500N/MM²-1700N/mm²

表面：去毛刺

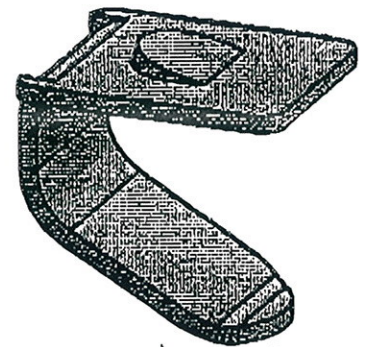
数量：350万

Abwicklung
flat projection



Walzrichtung
rolling direction

轧制方向



Grat: max 0,08
burr: max 0,08
最大去毛刺0.08
Einsatzgewicht: 0,058g
initial weight: 0,058 g

重量0.058g

This drawing is our property. Duplication or delivery to third party and other usage without written permission is not allowed. Noncompliance is punishable and obligate to compensation.

C:8217020.SZA

Revisions ① 09.02.2011 01177RM ② 23.08.2011 01526KEM ③ 29.07.2015 03585RIM ④ 20.08.2015 03623RIM	DIN A4	Date	Name	Material	spring steel 1.4310K alternative: SUS301-EH Finish Rm: 1500N/mm ² - 1700N/mm ²	重量0.058g Drawing no. 303 Replacement for 444 002 h of 01.07.1998 Replaced by
	Drawn	16.05.2008	Kempel	Weight		
	Check	19.05.2008	Brack			
	Scale	10:1				
Units [mm]						
Signatures without interference accord for DIN ISO 2768						

未注公差DIN ISO2768-m