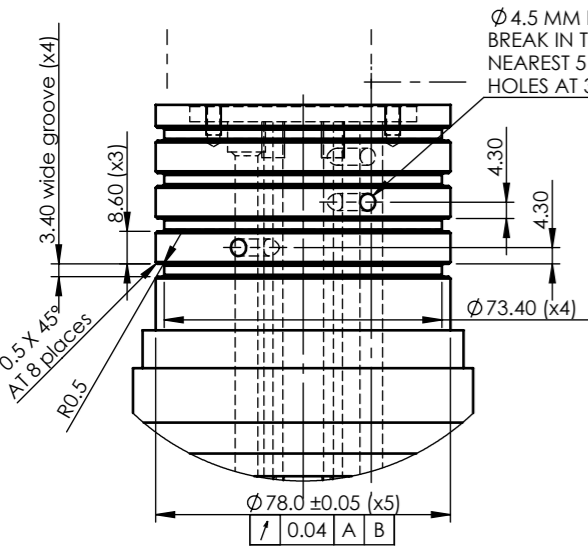
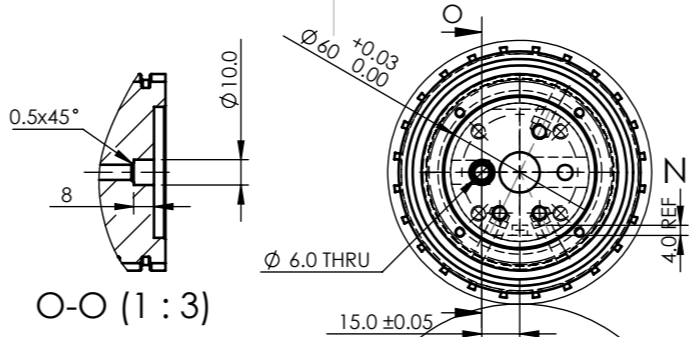


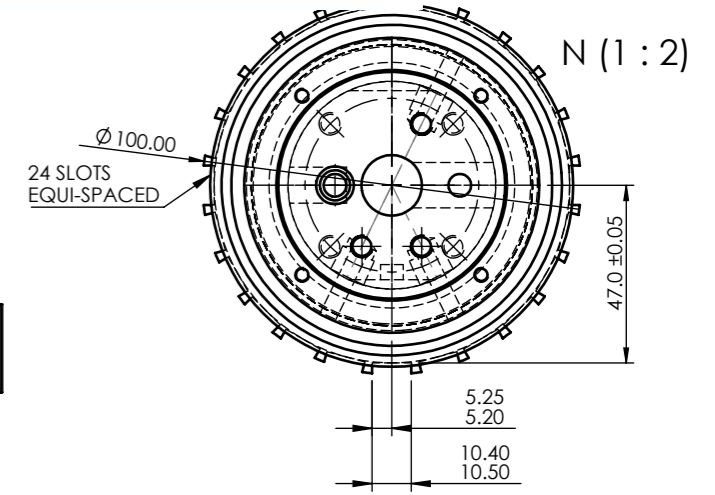
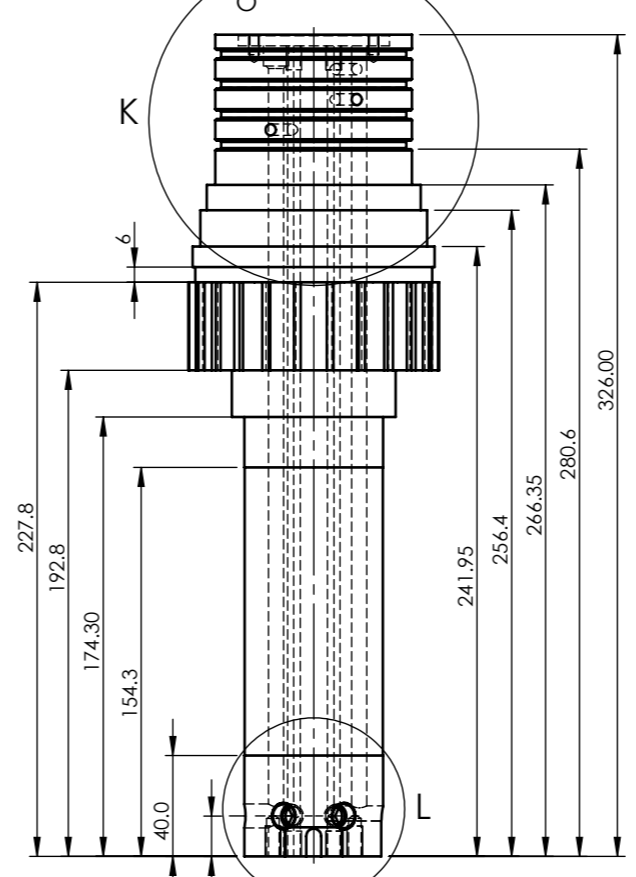
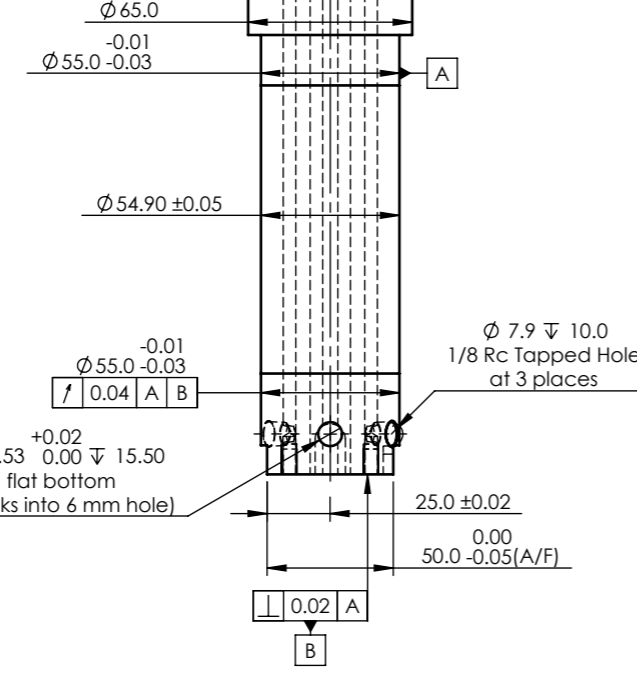
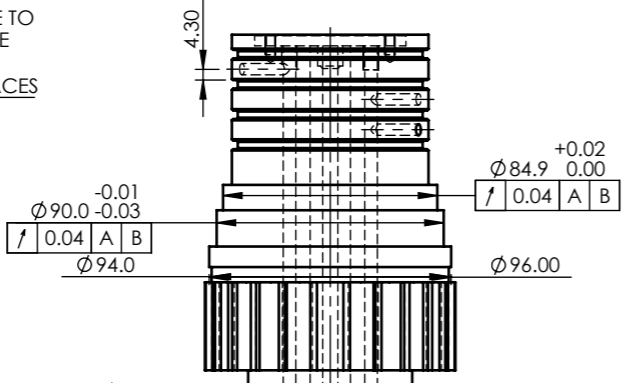
- Notes:
- Unless otherwise specified, there are no sharp edges
 - 0.5mm x 45 degree chamfer applies
 - Unless otherwise specified, the following tolerance apply to the part
 - Nil decimal places:
 - Up to 50, ± 0.4 mm; 50 to 100, ± 0.5 mm; 100 to 250, ± 0.8 mm
 - 250 to 2000, ± 1 mm; over 2000, ± 1.5 mm.
 - One decimal place, ± 0.25 mm
 - Two decimal places, ± 0.1 mm
 - Angular dimensions, $\pm 0.5^\circ$
 - Machined surface finish:
 - Up to One decimal place, 3.2Ra
 - Two decimal places, 1.6Ra
 - All dimensions apply after coating if coating is specified

REVISIONS				
REV.	DESCRIPTION	DATE	DRAWN BY	ECR NO
A	DRAWING RELEASE	07-Sep-16		DE

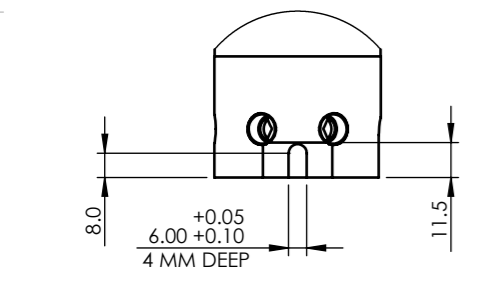
FOR QUOTATION ONLY



K (1 : 2)



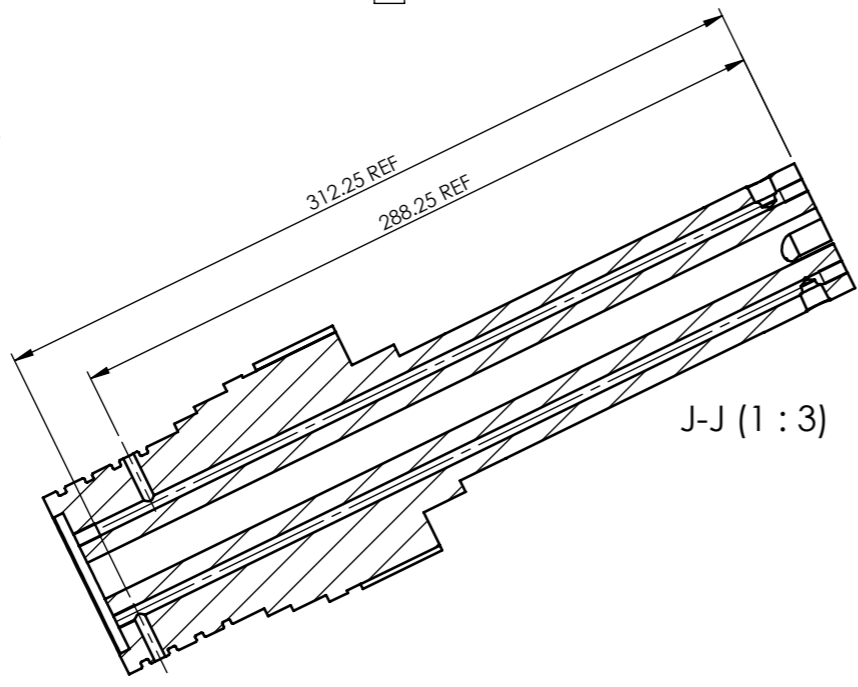
N (1 : 2)



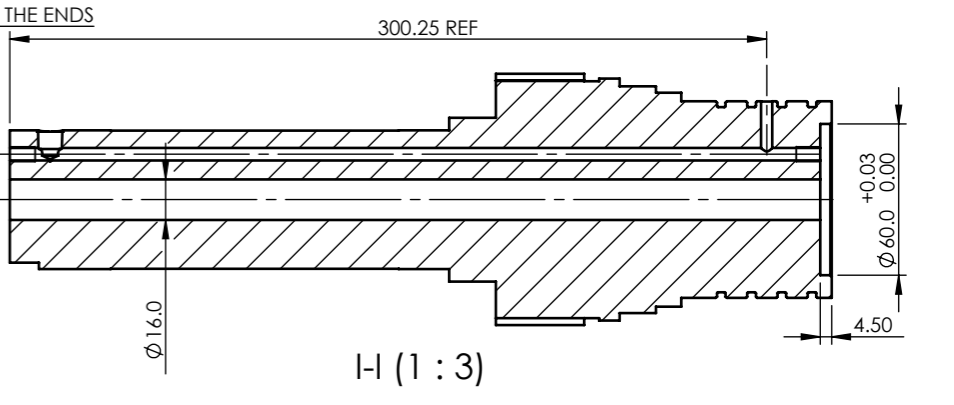
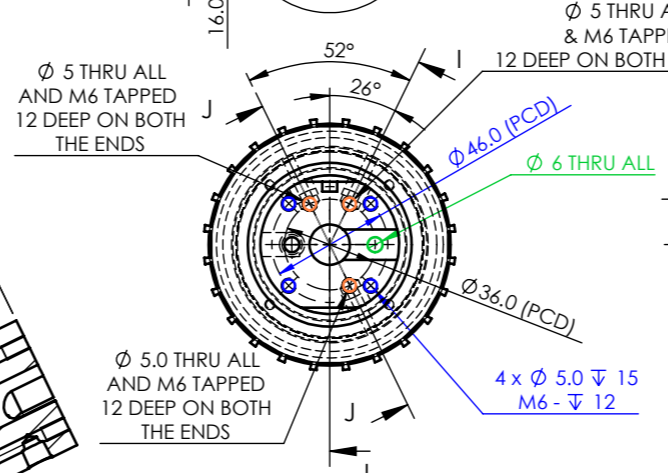
L (2 : 5)

ROTOR SHAFT
MAT: 4140
SURFACE: ELECTROLESS NICKEL PLATED, 10μ

材料 : 4140



J-J (1 : 3)



H-I (1 : 3)

UNLESS OTHERWISE SPECIFIED: DIMENSIONS ARE IN MILLIMETERS Projection		Machined finish if not specified: Up to 1 decimal place, 3.2 Ra Two decimal places, 1.6 Ra Three decimal places, 0.8 Ra		DO NOT SCALE DRAWING		REVISION	
DRAWN		SIGNATURE		DATE		TITLE:	
CHK'D				7/9/2016			
APPV'D							
MFG							
Q.A							
MATERIAL:						DWG NO.	
						A3	
WEIGHT:"				SCALE:1:5		SHEET 1 OF 1	